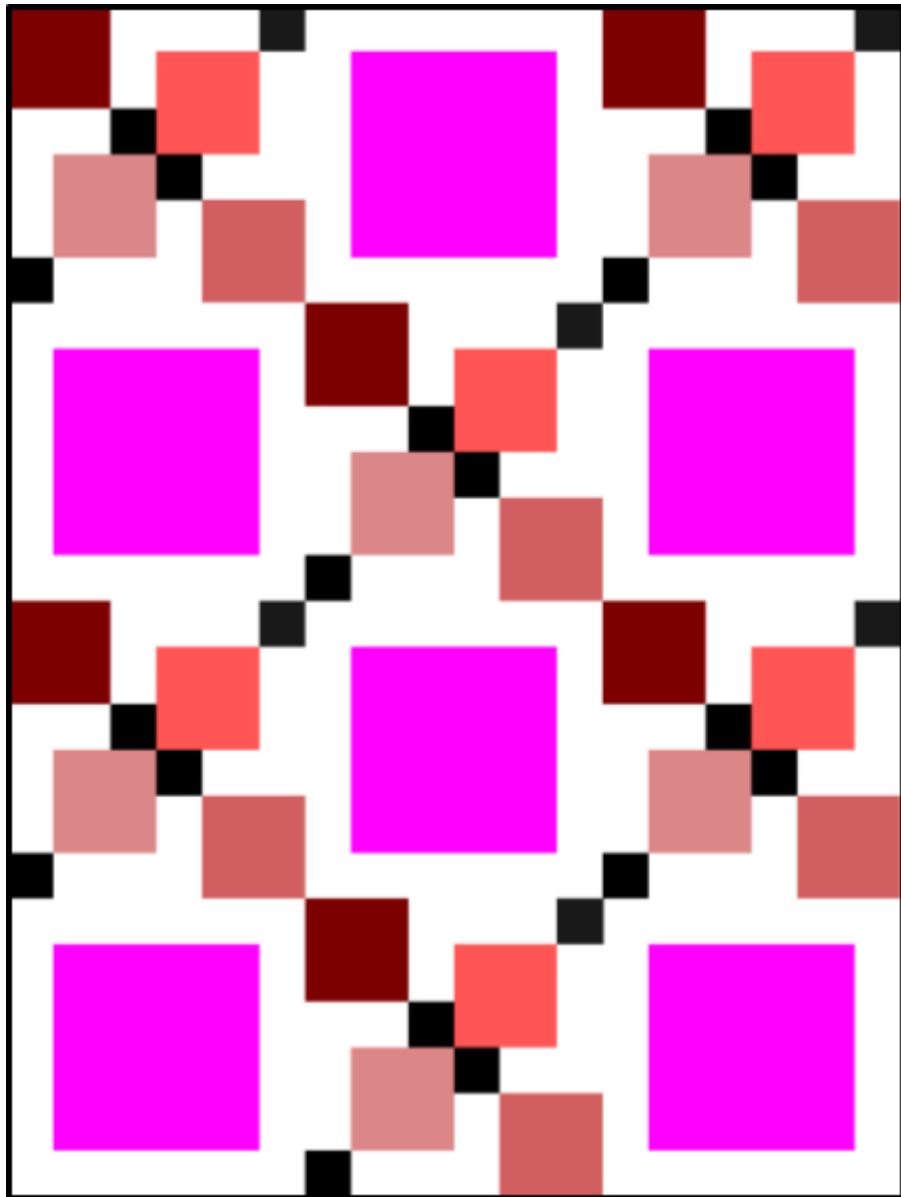


Disappearing Nine Patch with Feature Fabric



Quilt made from 5" and 9.5" squares

Materials Needed

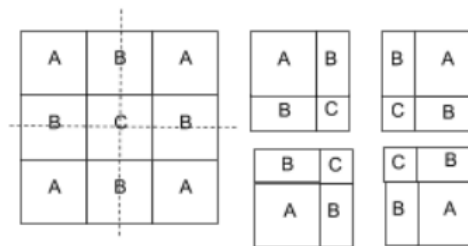
- **For Disappearing Nine Patches (Make 6)**
 - 24 - 5" squares from assorted fabrics (Piece A)
 - 24 - 5" squares from background fabric (Piece B)
 - 6 - 5" squares for centers (Piece C)
- **For Featured Fabric Blocks (Make 6)**
 - 12 - 2.5"×9.5" rectangles from background fabric
 - 12 - 2.5"×13.5" rectangles from background fabric
 - 6 - 9.5" Squares from feature fabric(s)

Sewing Instructions

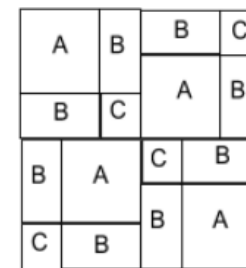
1. Sew together nine patches as shown below.



2. Cut nine patches in half horizontally and vertically.

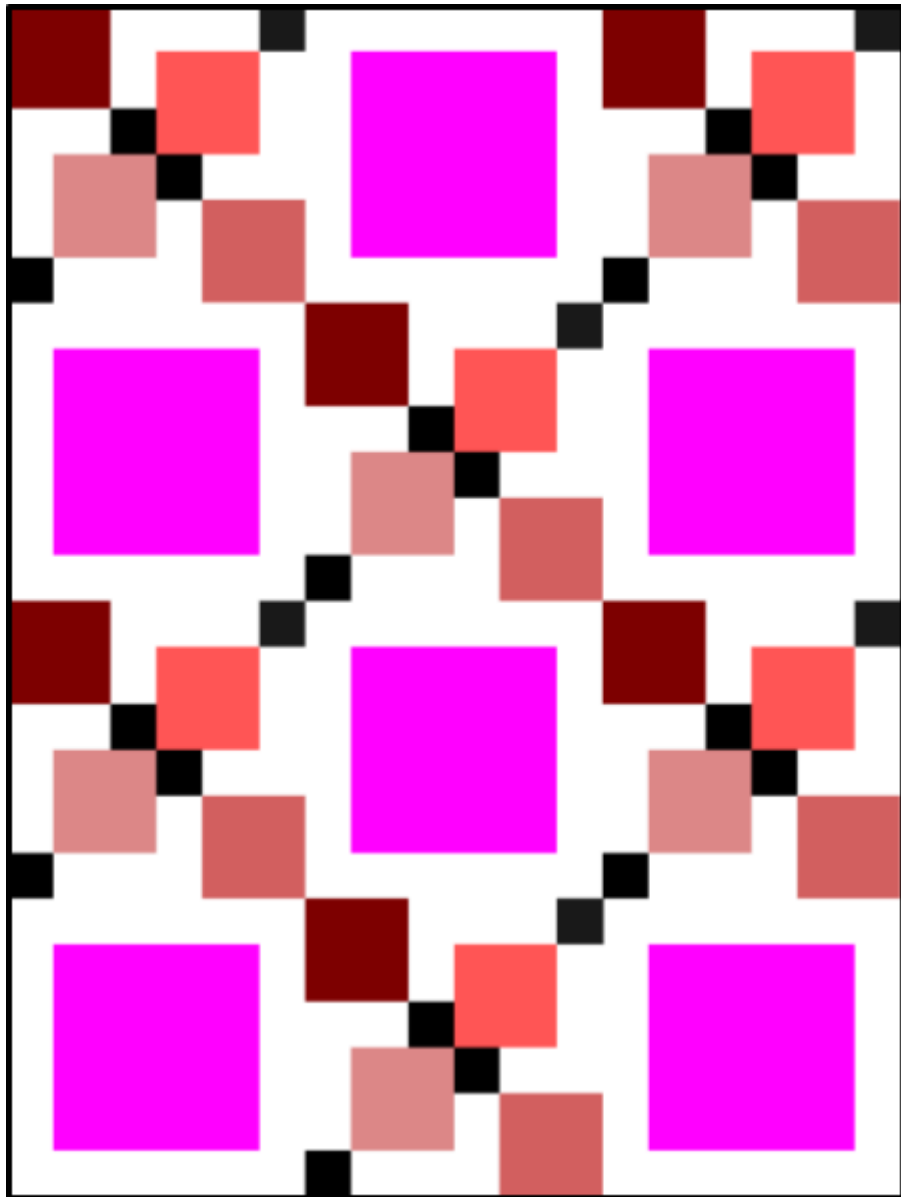


3. Rearrange the blocks as shown below and sew them together.



4. Construct the feature fabric blocks by sewing the two 2.5"× 9.5" rectangles to the sides of the block and then sewing the two 2.5×13.5" rectangles to the top and bottom of the block.
5. Sew blocks together as shown on the front of the card. (3 blocks per row, 4 rows)

Disappearing Nine Patch with Feature Fabric



Quilt made from 5" and 9.5" squares

Materials Needed

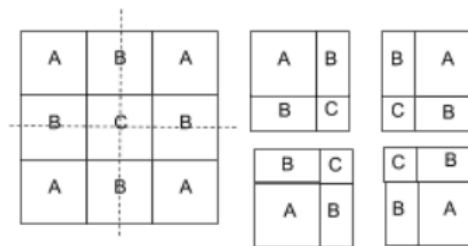
- **For Disappearing Nine Patches (Make 6)**
 - 24 - 5" squares from assorted fabrics (Piece A)
 - 24 - 5" squares from background fabric (Piece B)
 - 6 - 5" squares for centers (Piece C)
- **For Featured Fabric Blocks (Make 6)**
 - 12 - 2.5"×9.5" rectangles from background fabric
 - 12 - 2.5"×13.5" rectangles from background fabric
 - 6 - 9.5" Squares from feature fabric(s)

Sewing Instructions

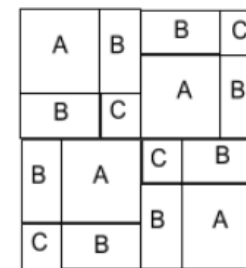
1. Sew together nine patches as shown below.

A	B	A
B	C	B
A	B	A

2. Cut nine patches in half horizontally and vertically.



3. Rearrange the blocks as shown below and sew them together.



4. Construct the feature fabric blocks by sewing the two 2.5"× 9.5" rectangles to the sides of the block and then sewing the two 2.5×13.5" rectangles to the top and bottom of the block.
5. Sew blocks together as shown on the front of the card. (3 blocks per row, 4 rows)